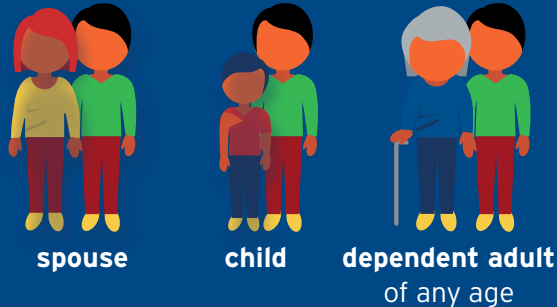


SUPPORTING MILITARY FAMILIES WITH SPECIAL MEDICAL AND EDUCATIONAL NEEDS

SPECIAL MEDICAL NEEDS

You should enroll in EFMP if you have a:



- Who requires special medical services for a chronic condition
- Who receives ongoing services from a medical specialist
- Who has significant behavioral health concerns

SPECIAL EDUCATION NEEDS

You should enroll if you have a:



from birth to age 21

- Who receives special education services through an Individualized Education Program
- Who receives special medical services
- Who receives early intervention through an Individualized Family Service Plan
- Or is eligible for these services

Specific criteria can be found in DOD Instruction 1315.19

Connect with EFMP & Me

EFMP & Me is a tailored-to-you online tool that offers:

- Step-by-step support for EFMP enrollment, PCS preparation, deployment and more
- Customized help navigating anything from a new diagnosis to education options
- Convenient 24-hour access to EFMP resources from a range of programs

Find out more at

<https://efmpandme.militaryonesource.mil/>

Have questions?

Contact Army Community Service
or
Military & Family Readiness Center

JBER Army Community Service (ACS)

600 Richardson Drive
Building 600, Room A139
Comm: 907-384-1517
DSN: 317-384-1517

Military & Family Readiness Center (M&FRC)

8535 Wewak Drive
Building 8535
Comm: 907-552-4943
DSN: 317-552-4943

HELPING MILITARY FAMILIES WITH SPECIAL NEEDS THRIVE



EFMP Exceptional
Family Member
Program



THE EXCEPTIONAL FAMILY MEMBER PROGRAM HAS MORE THAN JUST ONE CONNECTION POINT FOR FAMILIES. THE PROGRAM HAS THREE SEPARATE COMPONENTS: IDENTIFICATION & ENROLLMENT, ASSIGNMENT COORDINATION AND FAMILY SUPPORT.



IDENTIFICATION & ENROLLMENT

Enrollment in the EFMP is mandatory for active-duty military members. When a family member is identified with special medical and/or educational needs, the special needs are documented through enrollment in the EFMP. Medical services work with families to coordinate identification and enrollment in EFMP.

JBER EFMP Medical
(907) 580-4609

5955 Zeamer Avenue
(Next to the AAFES Express in the Hospital-RM 1G-107)

usaf.jber.673-mdg.mbx.efmp@mail.mil



ASSIGNMENT COORDINATION

Medical and military personnel departments work with military members and families to coordinate assignments. While the military mission is the driving force, enrollment in EFMP ensures that a family member's special medical and/or educational needs are considered, since appropriate services may be limited in some locations.

JBER Air Force EFMP Assignments
(907) 552-6964

8517 20th Street, Suite 111
(Elmendorf People Center)

673FSS.FSPD.OutboundAssignments@us.af.mil



FAMILY SUPPORT

EFMP Family Support plays a critical role in helping families navigate the Identification and Enrollment and Assignment Coordination processes. They also connect families with resources and support — helping them to become their own best advocate — with services including:

- Information and referral for military support providers and community services
- Education and outreach
- Referral to other Military and Family Support
- Warm hand-offs to the EFMP at the next location
- Non-clinical case management

JBER EFMP Family Support

Army
(907) 384-0225

600 Richardson Dr, Suite A-131
(Richardson Bldg 600)

Air Force & Space Force
(907) 552-8840

8517 20th Street, Suite 115B
(Elmendorf People Center)

673FSS.FSG.JBER_EFMP_FS@us.af.mil

WHY ENROLL?

Enrollment ensures that the family member's documented medical and/or educational needs are considered during the assignment process. EFMP enrollment is required before you may enroll in TRICARE ECHO (<https://www.tricare.mil/Plans/SpecialPrograms/ECHO>)

SERVICE SPECIFIC EFMP INFORMATION

Air Force & Space Force EFMP

<https://www.afpc.af.mil/Airman-and-Family/Exceptional-Family-Member-Program>

Army EFMP

<https://efmp.amedd.army.mil/>

Marine Corps EFMP

<https://usmc-mccs.org/services/family/exceptional-family-member/>

Navy EFMP

<https://www.mynavyhr.navy.mil/Support-Services/Exceptional-Family-Member/>



WE KNOW THE SYSTEM.
WE CAN HELP.